

UNITY AUDIO LTD

The Rock MK II

PROFESSIONAL 2 WAY ACTIVE STUDIO MONITOR

Owner's manual



CE

RoHS



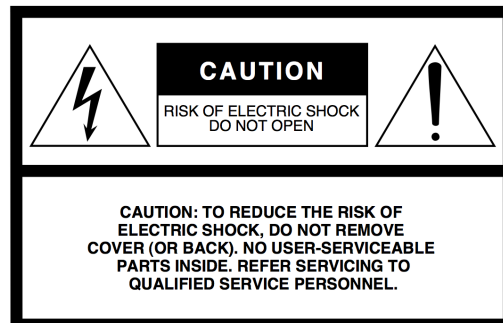
THANK YOU!

Thank you for buying the Unity Audio THE ROCK, one of the most accurate 2 way active studio monitors available. We wish you many years of productive, trouble-free and pleasurable use from THE ROCK.

Please read this user manual and keep in a safe place.

Unity Audio

IMPORTANT SAFETY INSTRUCTIONS



1. Read these instructions.
2. Keep these instructions.
3. Heed all warnings.
4. Follow all instructions.
5. Do not use this apparatus near water.
6. Clean only with dry cloth.
7. Do not block any ventilation openings. Install in accordance with the manufacturer's instructions.
8. Do not install near any heat sources such as radiators, heat registers, stoves, or other apparatus (including amplifiers) that produce heat.
9. Do not defeat the safety purpose of the polarized or grounding-type plug. A polarized plug has two blades with one wider than the other. A grounding type plug has two blades and a third grounding prong. The wide blade or the third prong are provided for your safety. If the provided plug does not fit into your outlet, consult an electrician for replacement of the obsolete outlet.
10. Protect the power cord from being walked on or pinched particularly at plugs, convenience receptacles, and the point where they exit from the apparatus.
11. Only use attachments/accessories specified by the manufacturer.
12. Use only with the cart, stand, tripod, bracket, or table specified by the manufacturer, or sold with the apparatus. When a cart is used, use caution when moving the cart/apparatus combination to avoid injury from tip-over.
13. Unplug this apparatus during lightning storms or when unused for long periods of time.
14. Refer all servicing to qualified service personnel. Servicing is required when the apparatus has been damaged in any way, such as power- supply cord or plug is damaged, liquid has been spilled or objects have fallen into the apparatus, the apparatus has been exposed to rain or moisture, does not operate normally, or has been dropped.

WARNING

Prior to power-up for the first time ensure that the THE ROCK is set to the correct voltage (see 'Power' p.5)

Prior to power-up during day-to-day operation, ensure that THE ROCK's gain level control knob is set to minimum (see p.7) and/or that the audio source level from the mixing console, digital audio workstation, etc., is set to zero.

Failure to follow these instructions may result in damage to your hearing, THE ROCK, and lead to a possible fire risk.

To avoid electric shock remove power cord before replacing fuse.

CAUTION

Humidity

For a superior and consistent sonic performance, considerable care has been taken in the manufacture of THE ROCK to ensure that the cabinet is acoustically sealed. However, as with any electrical equipment, should you move THE ROCK from a cold environment into a warm room, condensation may form on the components inside. To avoid damaging the product please allow it to reach room temperature before operation.

Unpacking & handling

Care should be taken when removing THE ROCK from its carton.

The speaker cone (diaphragm and surround) is a delicate component. Do not touch at any time.

Listening levels

THE ROCK is capable of sound pressure levels (SPL's) in excess of 105dB. Avoid listening at sustained high levels, as this may cause:

- permanent hearing damage
- the speaker to overheat, leading to a fire hazard.

Running in

Speaker drivers contain moving parts. It is recognised to be good practice to run in new speakers prior to normal use for improved bass extension, sweeter highs and a smoother performance overall. This process is also referred to as 'breaking in' or 'burning in'.

We recommend a run-in period of at least 12 hours (or overnight); ideally longer.

Having observed the warnings on page 3 of the manual, connect an audio playback device (CD, MP3 player, etc.) to THE ROCK speaker(s). Place the playback device in loop mode and play dynamic music through THE ROCKs at a *moderate* level; enough to drive (move) the speaker diaphragm a reasonable amount.

Power

THE ROCK voltage is factory set. Options are:

An arrow on the voltage setting label (see p. 7) indicates the voltage setting of THE ROCK.

IMPORTANT: ensure that THE ROCK is set to the correct voltage for your region. Voltage settings must be set by the factory and cannot be switched by the user. If THE ROCK is set to the incorrect voltage for your region, contact Unity Audio. DO NOT power it up!

Fuse replacement

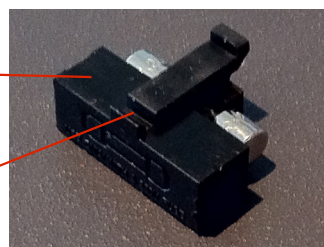
The fuse is located on the rear of THE ROCK in the fuse holder between the power switch and IEC mains input socket [Image A]. Remove the mains lead. Prise out the fuse holder by placing a small slotted screwdriver into the slot located on the underside and near the front of the fuse holder [Image B]. Carefully pull the fuse holder outwards. Replace the fuse {see 'Specifications' (p.9) for fuse type.}. Push the fuse holder back into position.



[Image A] showing fuse holder location

Fuse holder

Place screwdriver here



[Image B] showing slot on underside of fuse holder

Cabinet care

Clean the cabinet with a soft, lint-free cloth. The use of solvents or abrasive cleaners should be avoided.

Positioning

THE ROCK drive unit contains a powerful magnet. Please do not position within 1 metre of a cathode ray tube (CRT) television or display monitor.

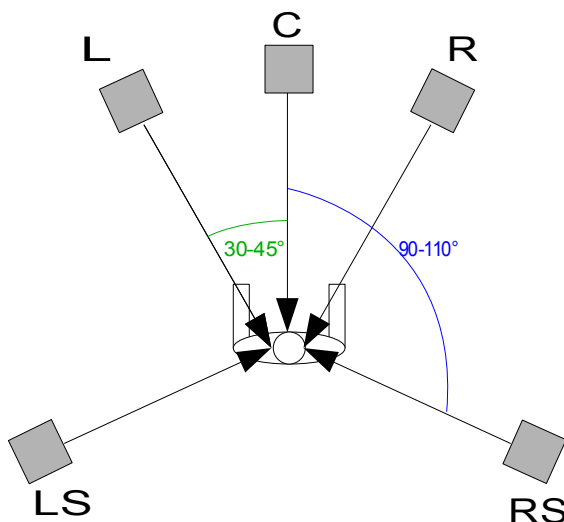
For best results, THE ROCK should be placed on a sturdy speaker stand such as the Unity Audio [THE MONOLITH](#).

If left untreated, room acoustics (room modes) can seriously affect the accuracy of audio reproduction, especially at lower frequencies. The following guidance is here to help minimise the effects of any untreated room acoustic problems.

THE ROCK is designed as a near field studio monitor and should therefore be positioned, ideally, between 0.75 and 2 metres from the listener. A stereo pair of ROCK monitors should be equidistant from the listener and between 1.5 and 1.8 metres apart, placed upright and directed toward the listener with the tweeter at around ear level. Small adjustments to the speaker placement and/or their angle to the listener, and/or the listener's seating position, will help the listener locate the audio 'sweet spot', i.e. a strong central audio 'image'.

Each monitor should also be equidistant from side walls and not too close to any wall or other reflective surface, or the corners of the room. Again, since room modes can influence what you hear in many ways, some experimentation may be needed to find the optimum speaker placement. Nevertheless, measures should be taken to remove any acoustic anomalies caused by the room.

The following diagram is a guide for optimum 5.1 surround speaker placement.



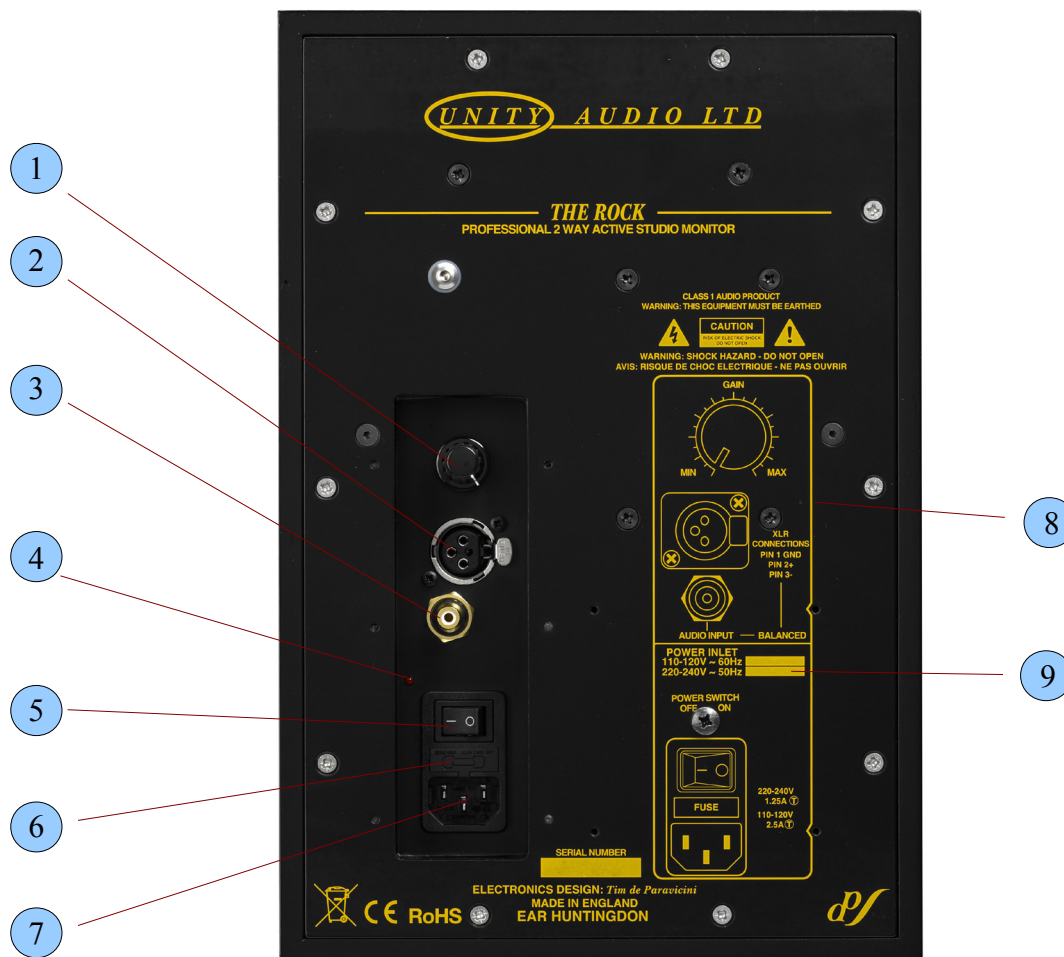
Warranty

This product carries a 1 year warranty.

If you suspect a problem, please contact your dealer, who will advise you on the appropriate action.

Any unauthorised repairs or modifications to this product will nullify the warranty.

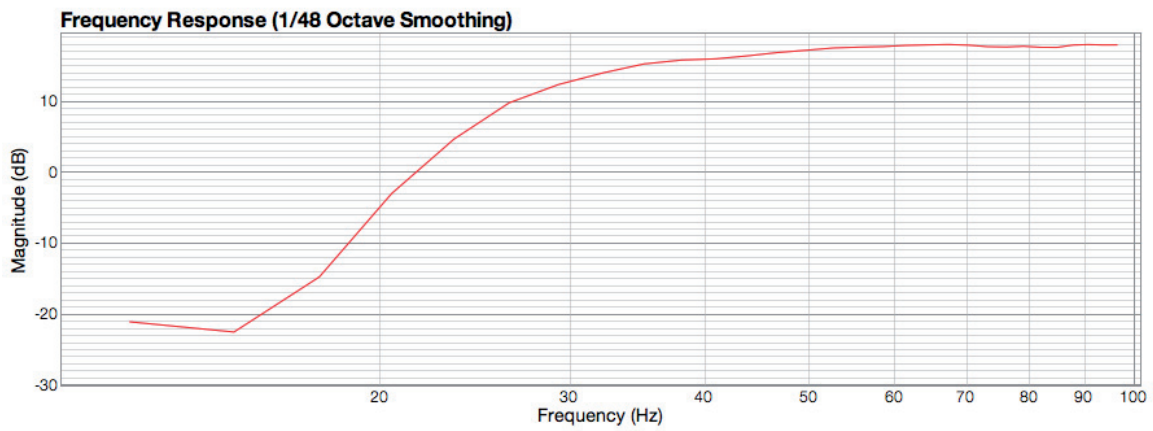
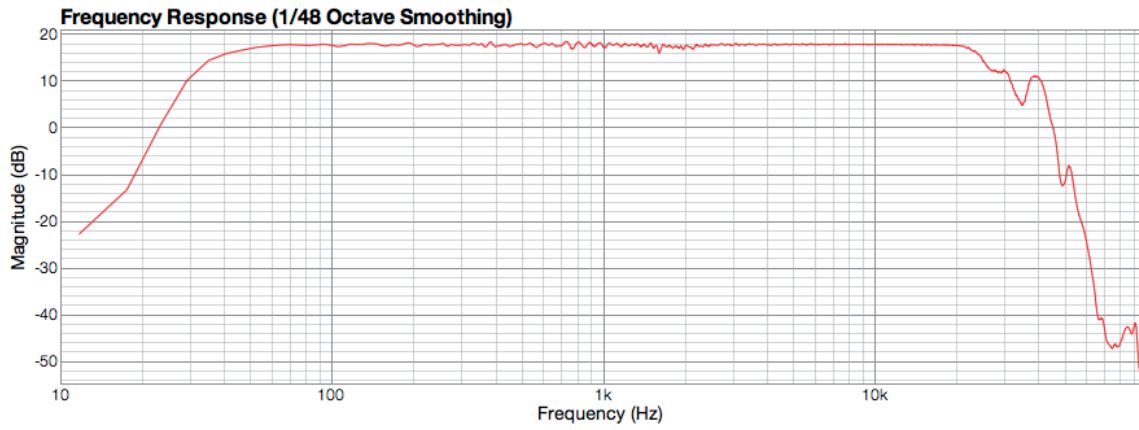
Rear panel



1. **Gain level control knob.** This control knob allows adjustment of the input signal at the XLR input (2) or RCA phono input (3). Turning the knob anti-clockwise lowers the volume; turning the knob clockwise increases the volume.
2. **Balanced XLR input:** pin 1: ground, pin 2: hot (+), pin 3 cold (-)
3. **Un-balanced RCA phono input**
4. **LED power indicator (on/off)**
5. **Power switch (on/off)** – (see Important Safety Instructions, p.3 and 'Power' p.5).
6. **Fuse holder** – (see Important Safety Instructions, p.3, 'Power' and 'Fuse Replacement', p.5).
7. **IEC mains input socket** – (see Important Safety Instructions, p.3 and 'Power' p.5).
8. **Rear panel guide** – this panel provides important information about control and connectivity of THE ROCK.
9. **Voltage setting label.** An arrow on this label points towards the voltage setting of THE ROCK. The voltage is factory set (see Important Safety Instructions, p.3 and 'Power' p.5)

Response curve

Frequency Response: +/- 3dB 33Hz–25kHz



Specifications

General specification \pm 3dB 33Hz–25kHz

Type

Crossover Frequency 2.7kHz

Frequency Response \pm 3dB 33Hz–25kHz

Maximum Output Level 105 dB (1m on-axis)

Enclosure

Closed cabinet design

12mm Corian front baffle

12mm Baltic birch 9-ply cabinet

Speaker unit

LF: 7"/180mm woofer (4 Ω)

HF: 50kHz folded ribbon tweeter (4 Ω)

Amplifier unit

2 x bespoke true class A/B 100 watt Esoteric Audio Research discrete amplifiers, one per driver

Total Output Power 100W

Input Sensitivity/Impedance

 LINE 1: +4 dB/20 k Ω (Balanced XLR)

 LINE 2: –10 dB/14 k Ω (Unbalanced RCA gold plated phono)

Level control

Power

Power Indicator LED

Power Requirement:

 Europe 220-240v AC, 50 Hz

 USA & Canada 110-120v AC, 60 Hz

 Japan 100v AC, 50/60 Hz

 Other..... 220-240v AC, 50 Hz

Fuse 1.25A (230v) ; 2.5A (110v). 20mm type

Option

Unity Audio THE MONOLITH speaker stand

Dimensions

11.2kg each

290mm deep x 220mm wide x 325mm high

Specifications and appearance are subject to change without notice. © Unity Audio Limited

Unity Audio Limited
Elms Barn, Baythorne End,
Halstead, Essex CO9 4AB
www.unityaudio.co.uk
sales@unityaudio.co.uk
tel +44 (0)1 440 785 843
fax +44 (0)1 440 785 845

